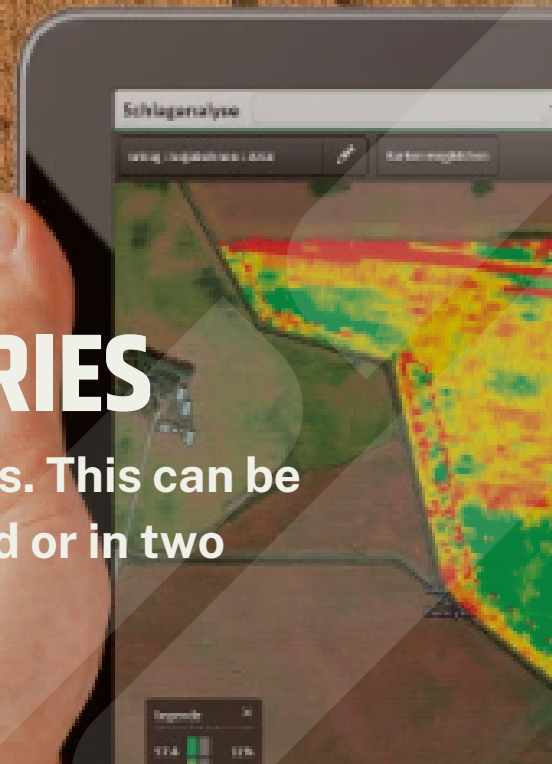


## MERGING FIELD BOUNDARIES

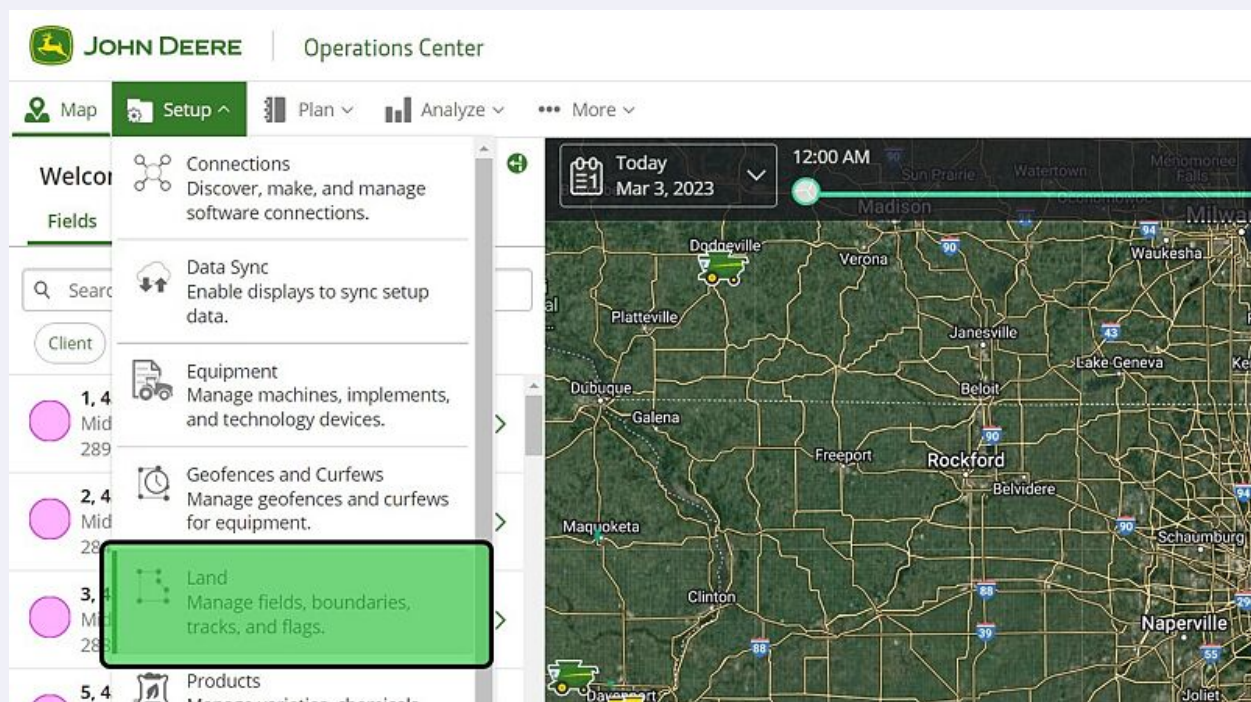
Use this How To guide to merge boundaries. This can be done when boundaries are in the same field or in two separate fields.



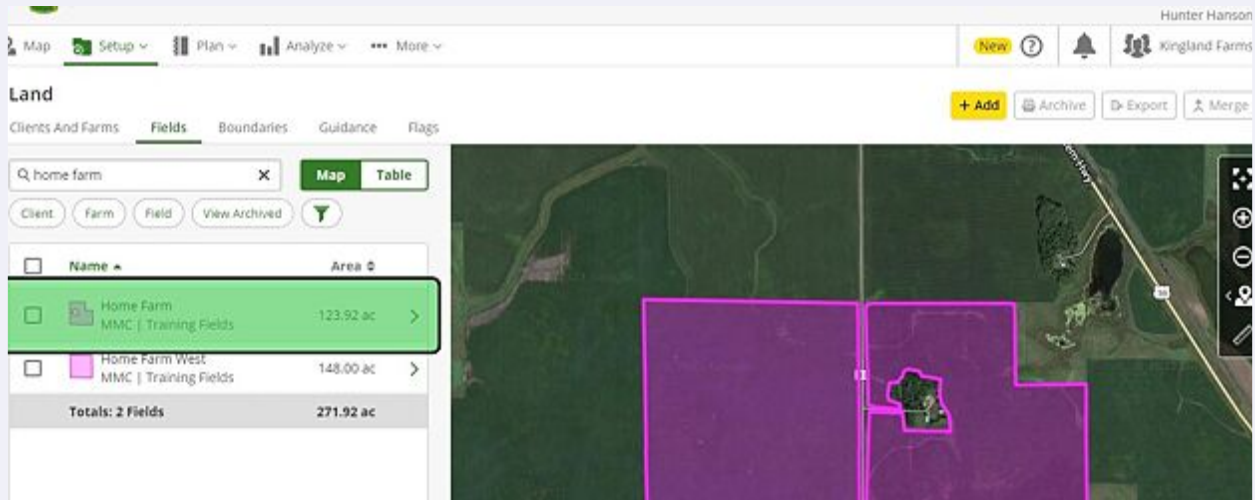
# Operations Center - Merging Field Boundaries

Use this How To guide to merge boundaries. This can be done when boundaries are in the same field or in two separate fields.

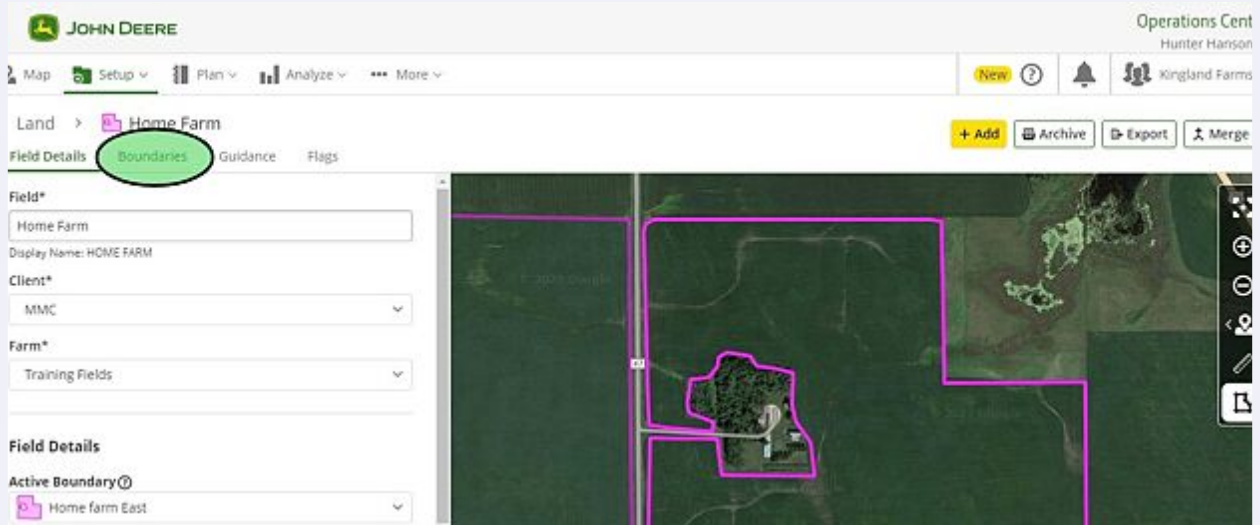
- 1 Select "Land" under the "Setup" menu at the top of the screen



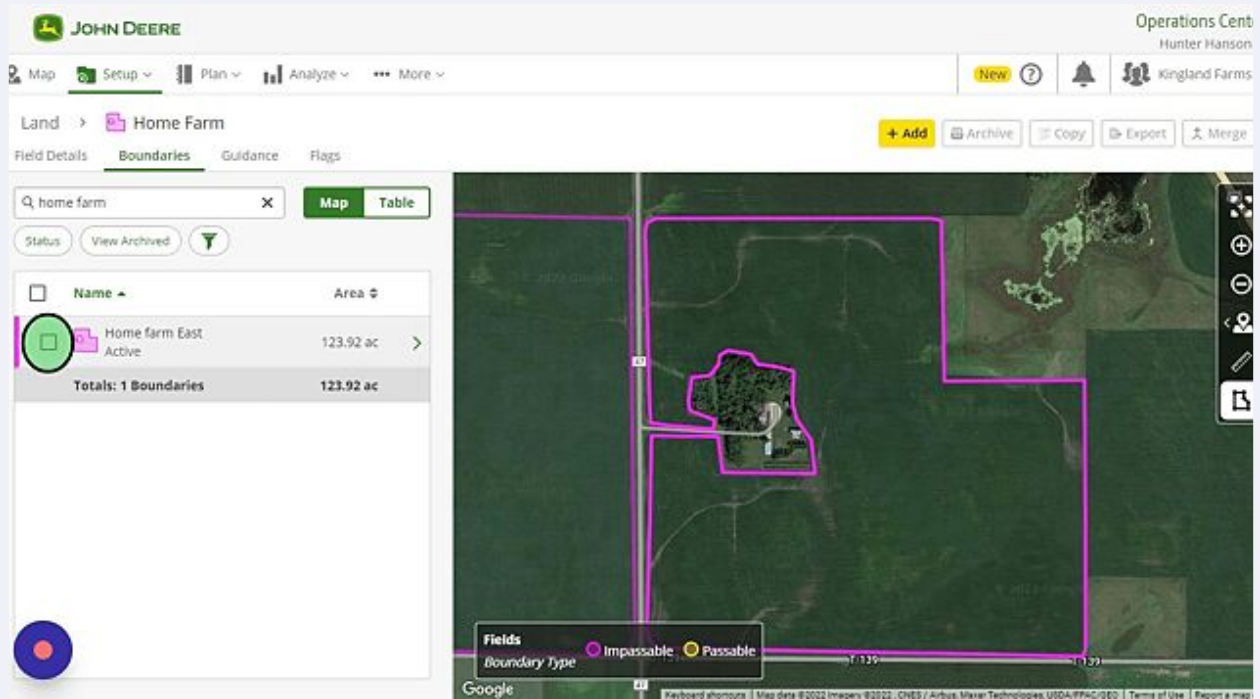
2 Find the field you would like to make changes to.



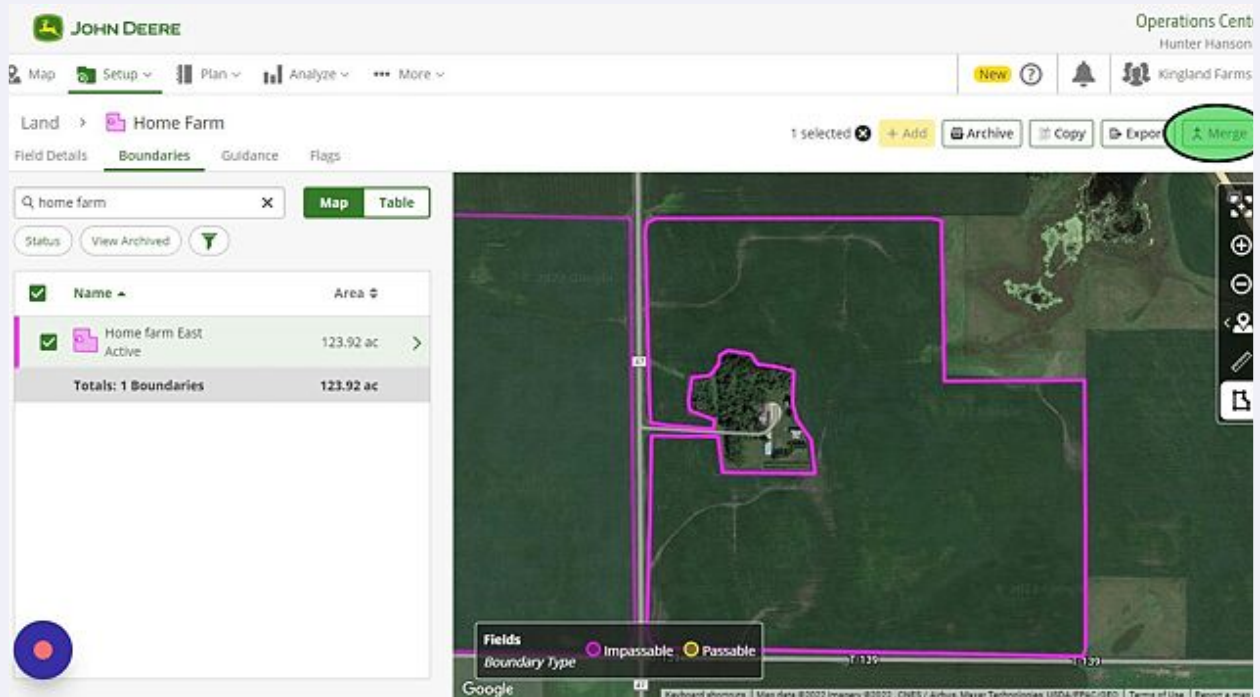
3 Select "Boundaries"



4 Click this checkbox.

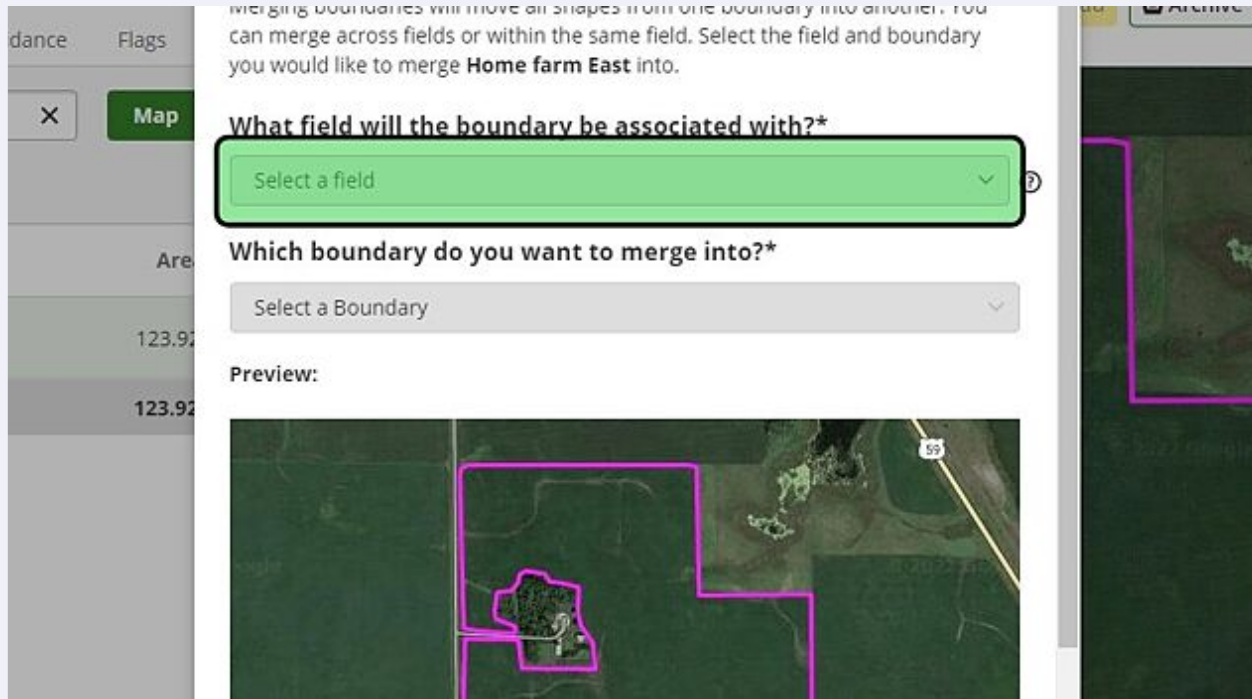


5 Click "Merge" in the upper right hand corner

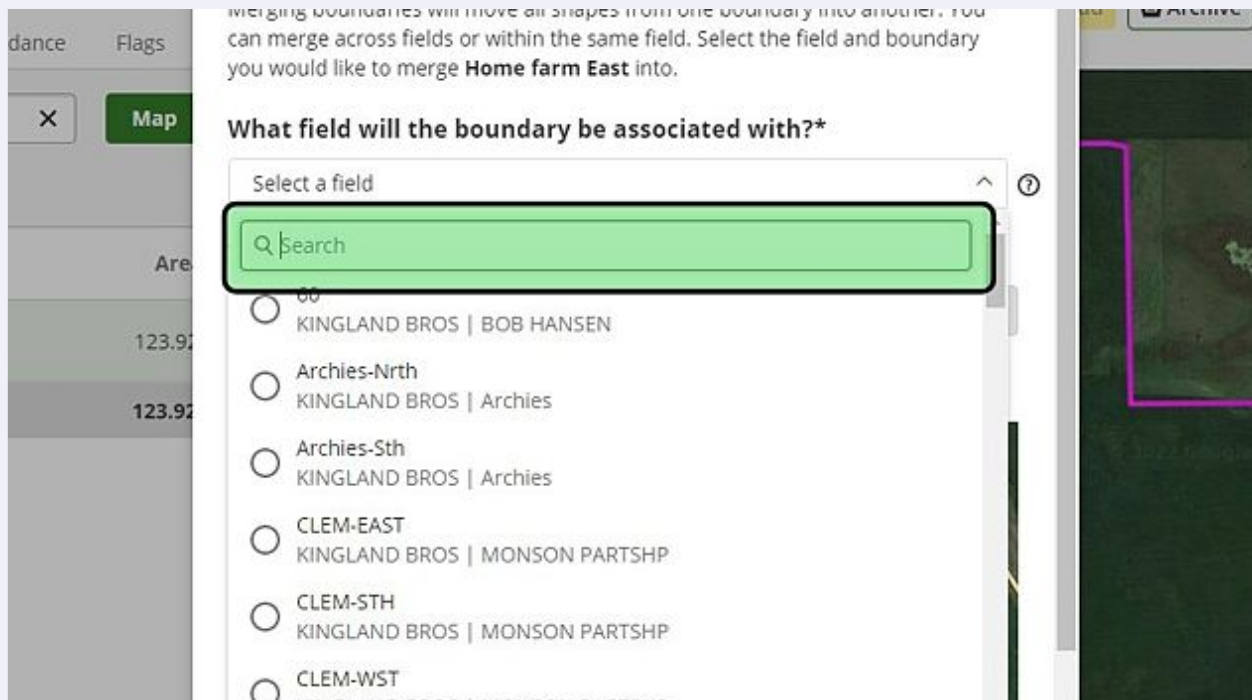




6 Click the "Select a field" drop down menu



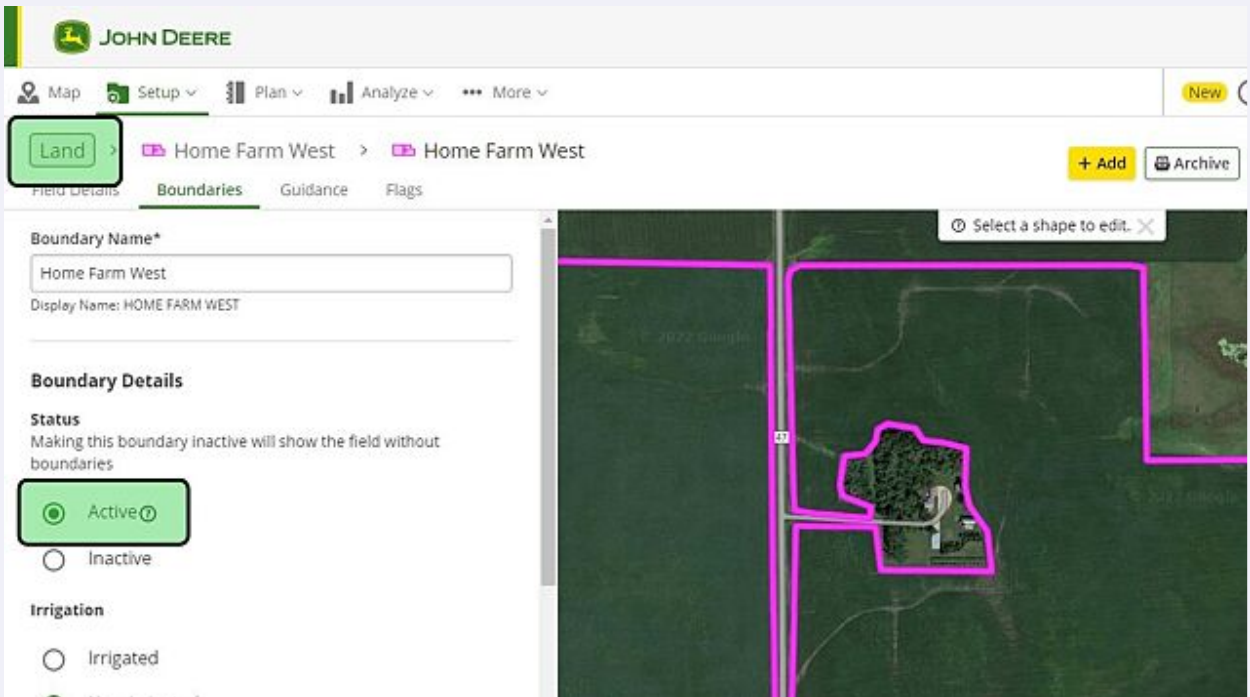
7 Type the field name in the search bar that you wish to merge boundaries with.



8 Select "Save"



9 Verify the boundary is "Active" and then select "Land"



10

Your field boundaries have been merged together into one boundary

The screenshot displays the John Deere Operations Center interface. At the top, the user is logged in as 'Hunter Hanson' under 'Kingland Farms'. The main navigation bar includes 'Map', 'Setup', 'Plan', 'Analyze', and 'More'. The 'Land' section is active, showing a list of boundaries on the left and a satellite map on the right. The map shows a large field boundary outlined in purple, which has been merged into a single boundary. A legend at the bottom of the map indicates that purple outlines represent 'Impassable' boundaries and yellow outlines represent 'Passable' boundaries. The table on the left shows the following data:

Name	Area
Home Farm West Home Farm West	271.92 ac
<b>Totals: 1 Boundaries</b>	<b>271.92 ac</b>